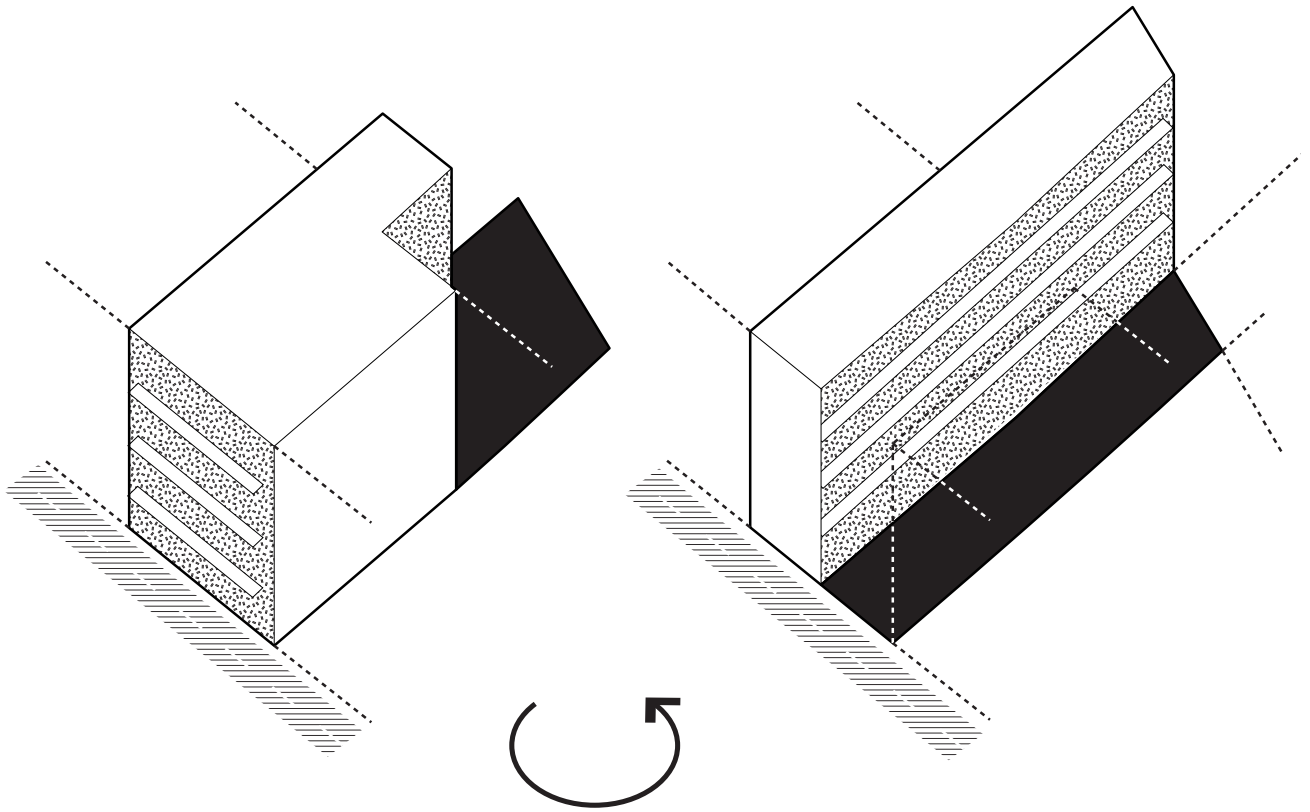


Party Wall Athens, Greece

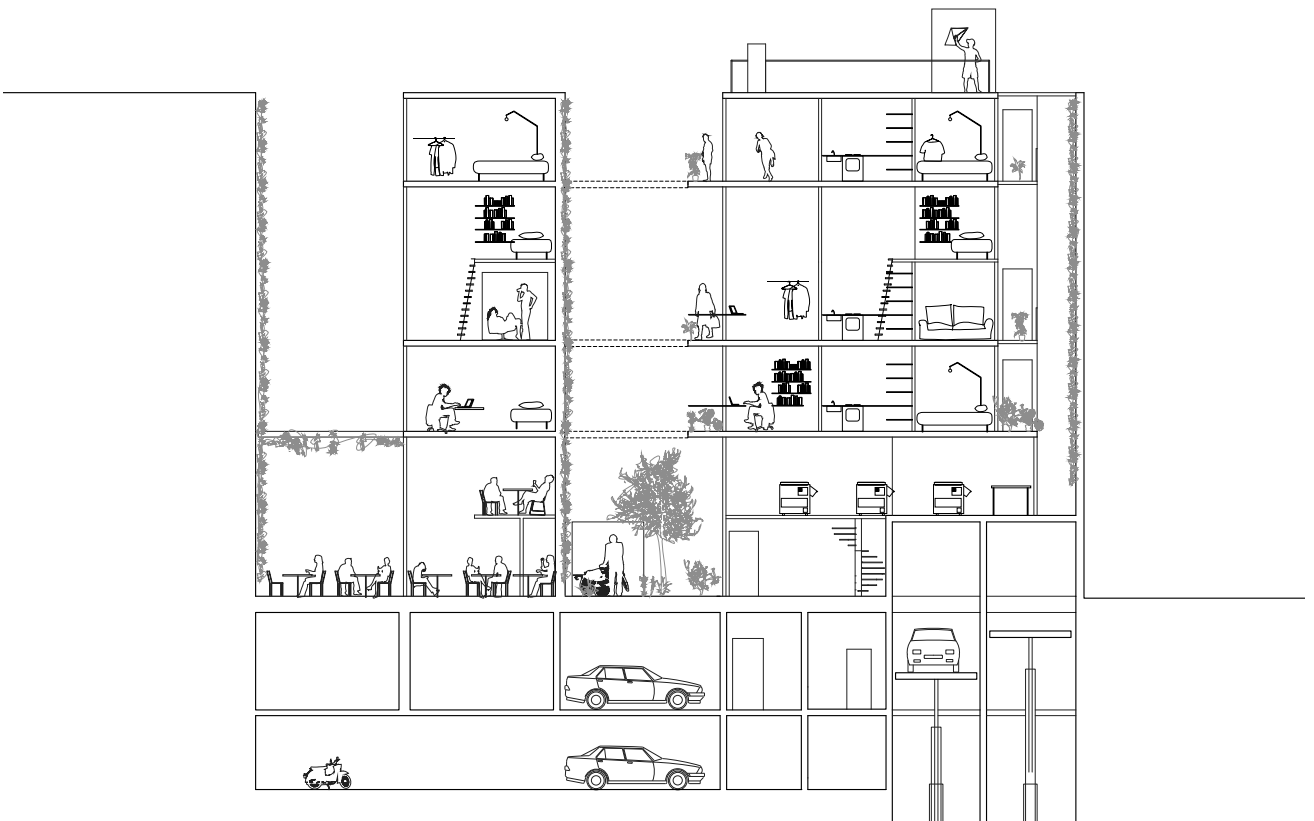
In the downtown neighborhood of Kerameikos and Metaxourgeio in Athens, Greece, SO–IL designed an urban housing development. Instead of the default backyard model, with open space isolated behind a building, Party Wall shifts the building mass to one side of the site, aligning it along the party wall, opening up new communal space that runs the length of the site. This generates a range of possibilities. A yard with the required 4.5 meter setback allows the urbanity to become an integral part of the living experience, while providing a communal zone as a buffer between the public and intimate realms of life. This design offers a new porous housing type—one that filters rather than barricades. Yards can proliferate to form an internal network, reviving city blocks from within.

The project was initiated in 2009 with Party Wall 1, a proposal for a student housing building that was selected as a finalist in the UPTO35 international competition. In the following year, SO–IL was commissioned to develop a continuation of Party Wall 1 on a new site. Party Wall 1 holds four floors and a basement with a total of 18 rentable student apartments, outside terraces and a communal laundry room. Party Wall 2 offers a mixture of unit types and floor plans catering to a variety of lifestyles. It includes 3 layers of parking, 26 residential units, a copy shop and café. Party Wall addresses both the dynamic nature of student life and the intimate quality of the neighborhood.

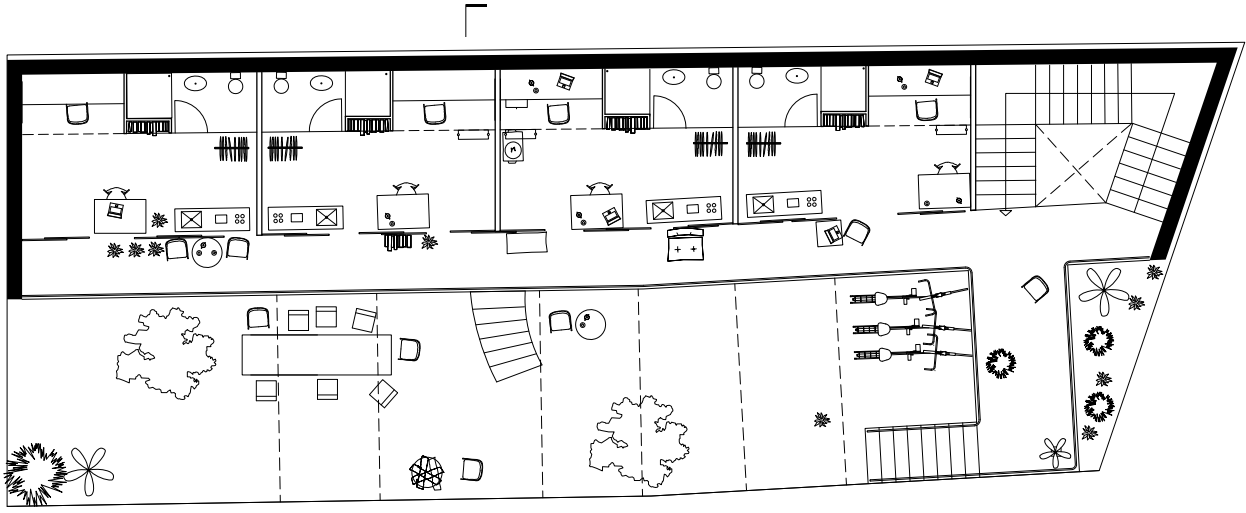
Program	Oliaros SA
Program	Student housing
Area	Wall 1 5,400 sf / 1.500 m² - Wall 2 17,200 sf / 1.600 m²
Status	Competition finalist 2009, Design Development 2010
Team	Florian Idenburg, Jing Liu, Ilias Papageorgiou, Iannis Kandyliaris, Cheong Kang Park



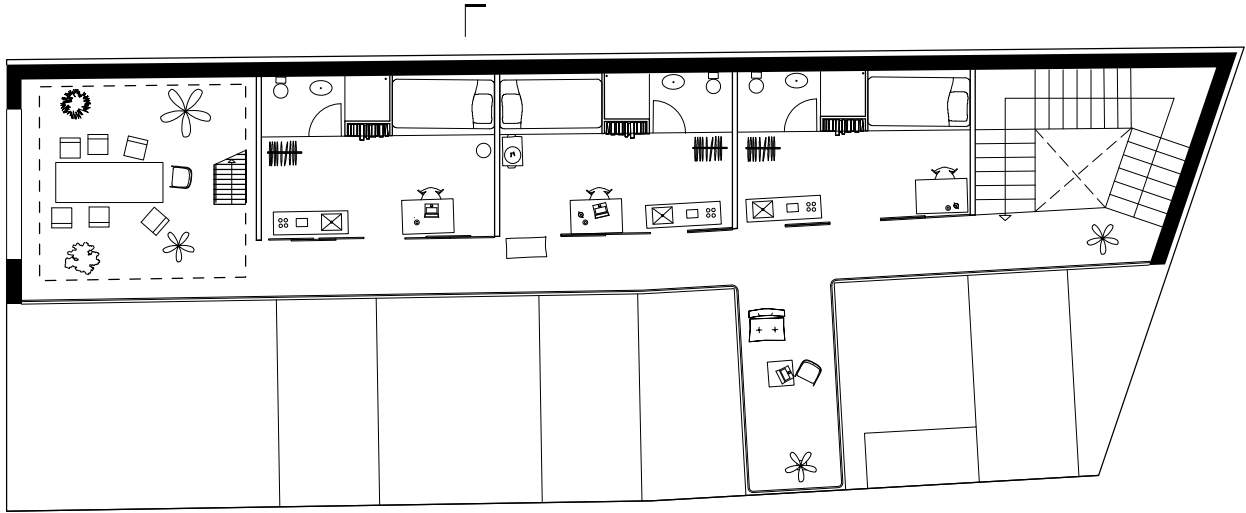
Concept diagram



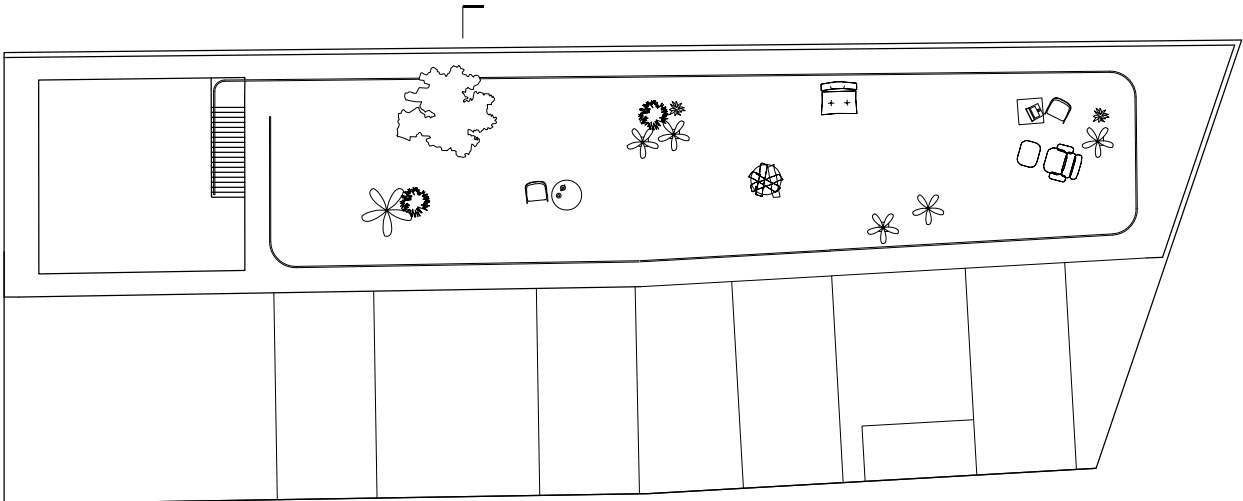
Section



Ground floor plan



Typical floor plan



Roof plan



Street elevation



Courtyard elevation



Courtyard



Model



Model